

# RMC FARMS



*Serenity Meets Luxury*

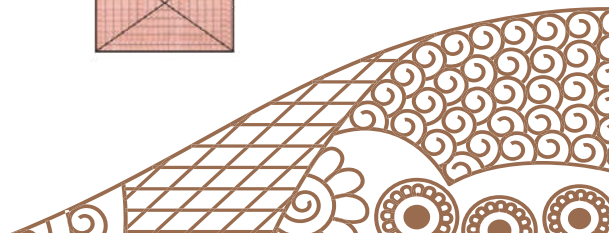
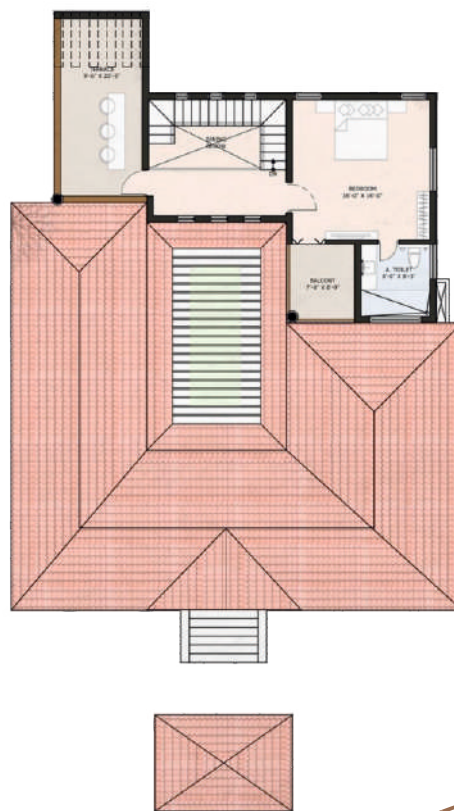
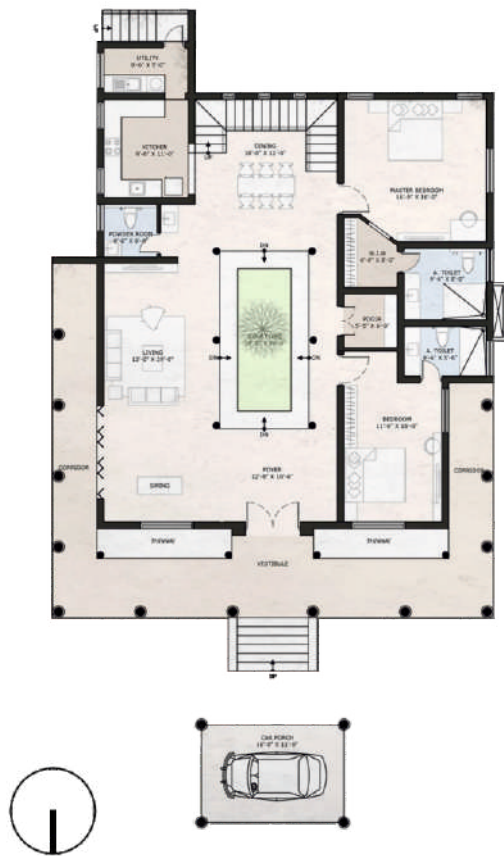


# Traditional Courtyard house with A MODERN TWIST

Set in the outskirts of Coimbatore city, amidst a serene hilly region called Ettimadai, the entire site has striking views of the hills surrounded by low-level clouds overlooking the lush greenery. Inspired by the typical Chettinad tropical houses, the residence is designed for relaxation and gathering overlooking the client-owned farmland facing north. The project is conceived as a modern-day courtyard house intended to tie all the spaces together that enable an intimate, interactive open-plan living atmosphere. The house is carefully positioned to take advantage of the diverse views all around it. The play of bricks in the house adds to another feel of visual comfort. The design imbibes the characteristics of the surrounding houses while preserving its own unique features in terms of materiality and spatial planning.







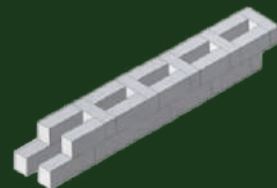




## Rat-Trap Bond

Exposed brick walls constructed using the rattrap method also add to the earthy and warm feel of the space. Learnings from the Laurie Baker Centre came in handy with the design and execution of this project.

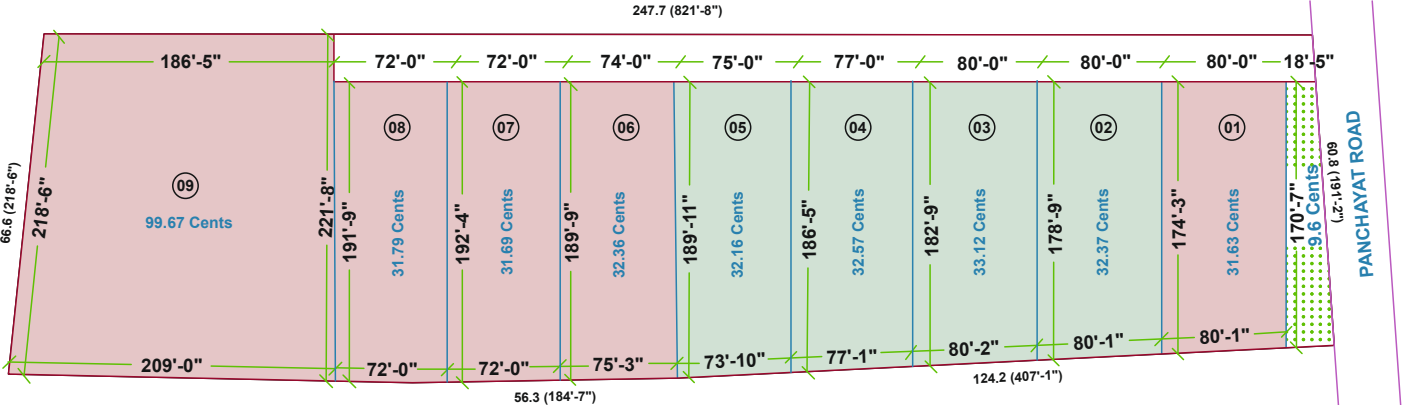
Isometric view of  
the house





Slope roofs and earthy materials like wood, bricks, stone and clay tiles are used to bring in visual harmony, and the colours replicate the rocky hills and the blue skies where the building is intentionally made to disappear into the scenic setting. One arrives at the north, and the door opens to the long axis with views on either side. The north side opens into the deck of the pool area facing the farm. The entrance has a and provides a comfortable space to relax at all times of the day. The south side opens into an outdoor area protected by a compound wall providing privacy from the next-door residents.

# SITE PLAN





## Key Features :

The nine 55 Cents of farm house plots are situated at Ettimadai, just a few minutes away from Salem–Ernakulam NH-544 near Amrita University and Ettimadai Railway station. Easily accessible to the ettimadai railway station bus stop. Highway access to the Airport at 28 km without entering the city.

The locality is surrounded by many Educational institutions namely Amrita University, Amritha School, Western Ghats international school and Venkateswara College. At Ettimadai Railway station, nearly 14 trains halt at this stop and move towards Coimbatore, Trichy, Salem, Palakkad, Eranakulam, Mangalore, Cannanore, etc., on daily basis. There are frequent bus facilities to Coimbatore and Kerala. The land is situated just 5 km away from Walayar Dam.

North–East monsoon and as well as South–West monsoon are applicable in this area and a good rainfall for six months in a year. Hence the groundwater source is very good and permanent. The peaceful area is surrounded by the Western Ghats with beautiful lush scenery, Most of the buyers are interested to buy lands in and around Ettimadai to enjoy the pleasant climate throughout the year.







- Scenic location with breath-taking views of the hills.
- Serene and secure gated-community.
- Pleasant weather conditions for a perfect weekend getaway.
- 15 varieties of fruit trees and other exotic plants and trees have been planted.
- Water sprinklers and irrigation systems have been installed.
- CCTV cameras and security systems are installed for added safety.
- 19 km away from Coimbatore
- 33 km away from Palakkad
- Close proximity to various universities.
- Easy access to Railway stations & bus terminals.



**FOR BOOKINGS AND INQUIRIES CONTACT**

**CALL : +91 95009 23511, 99946 13511**

**EMAIL : RAVIMURUGAA@GMAIL.COM**

**MORE PROPERTY IMAGES :**

**WHATSAPP: +91 95009 23511**

